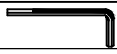










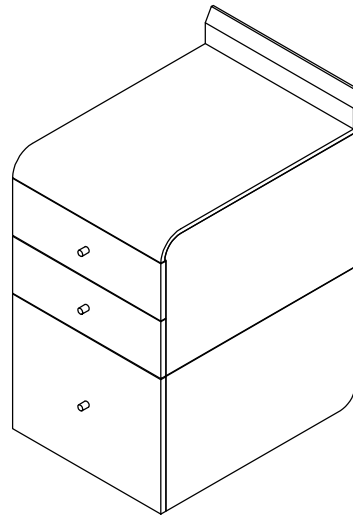


# ASSEMBLY INSTRUCTION

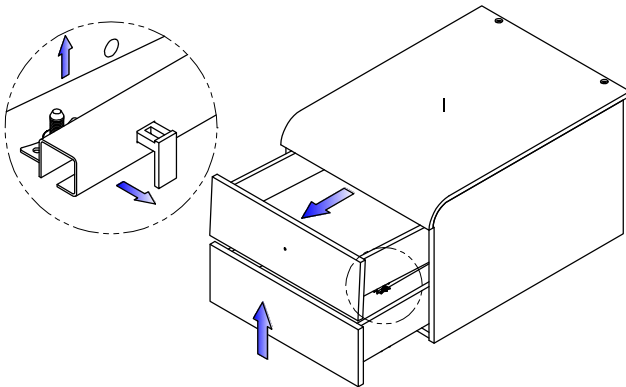
## PC 605 Desk High Pedestal

HELP LINE NUMBER 01443 816982

A		M4	1PC
B		1/4"*25mm	6PCS
C		#4*12mm	20PCS
D		Ø16*Ø1/4"*1L	2PCS
E			3PCS
F			2PCS
G		Ø8*30mm	4PCS
H		Front Panel	1PC
I		Top drawer	1PC
J		bottom drawer	1PC
K		Ø16*9mm	2PCS

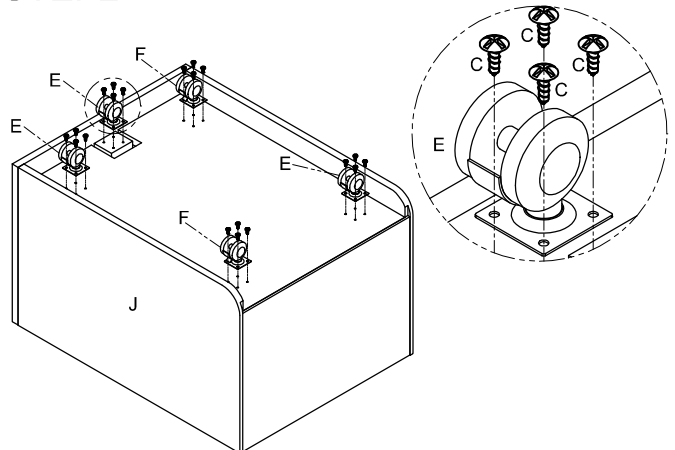


### STEP1

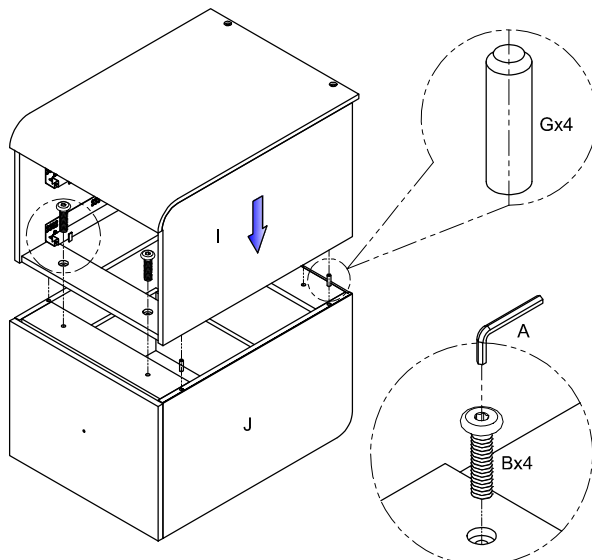


Pls remove both drawers.

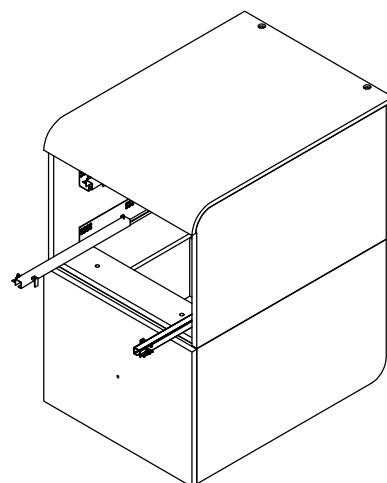
### STEP2



### STEP3

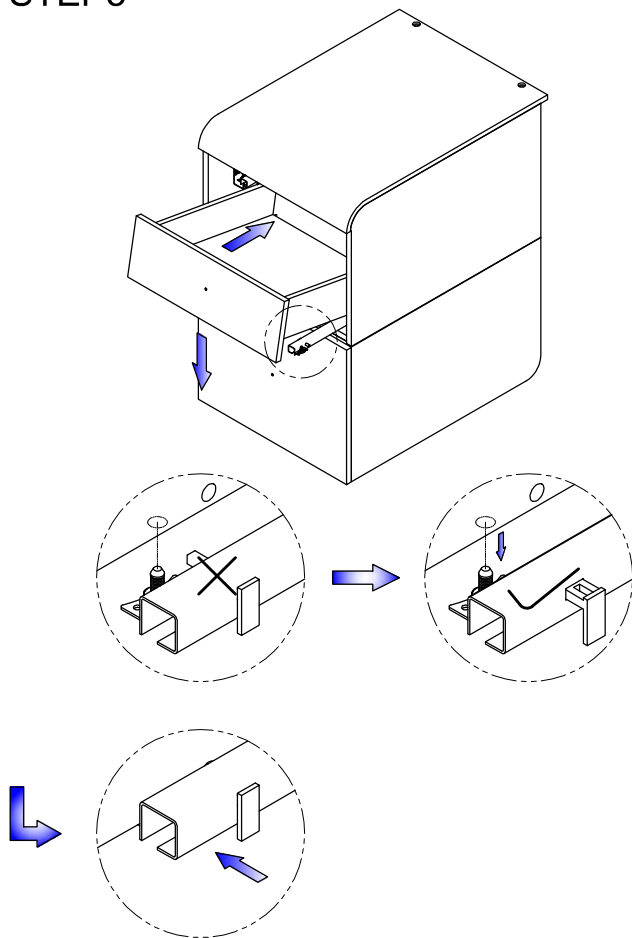


### STEP4

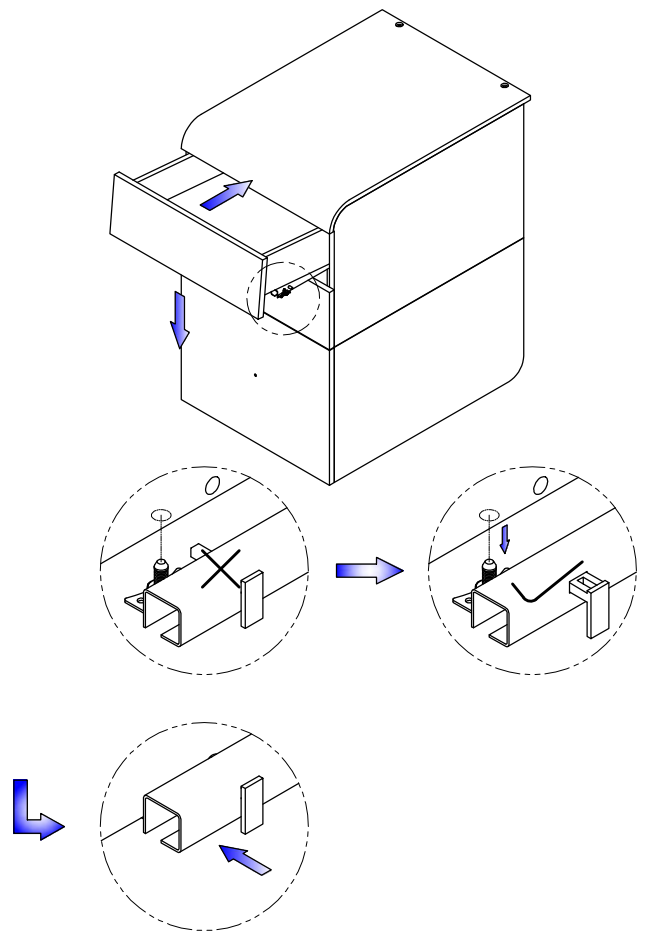


Pull out drawer runners to re-fit drawers starting with the lower first and first and fit as described in step5.

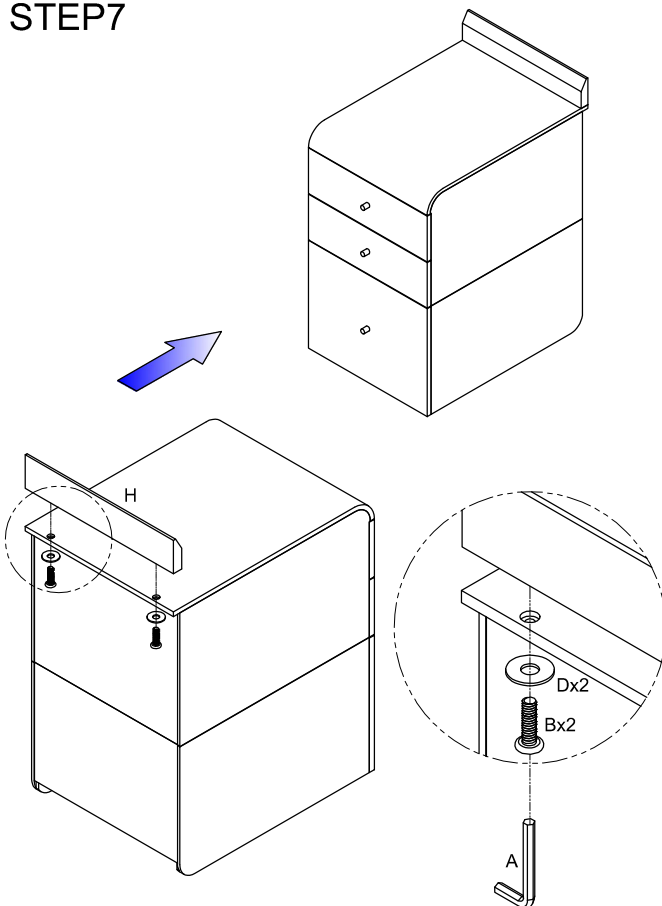
## STEP5



## STEP6

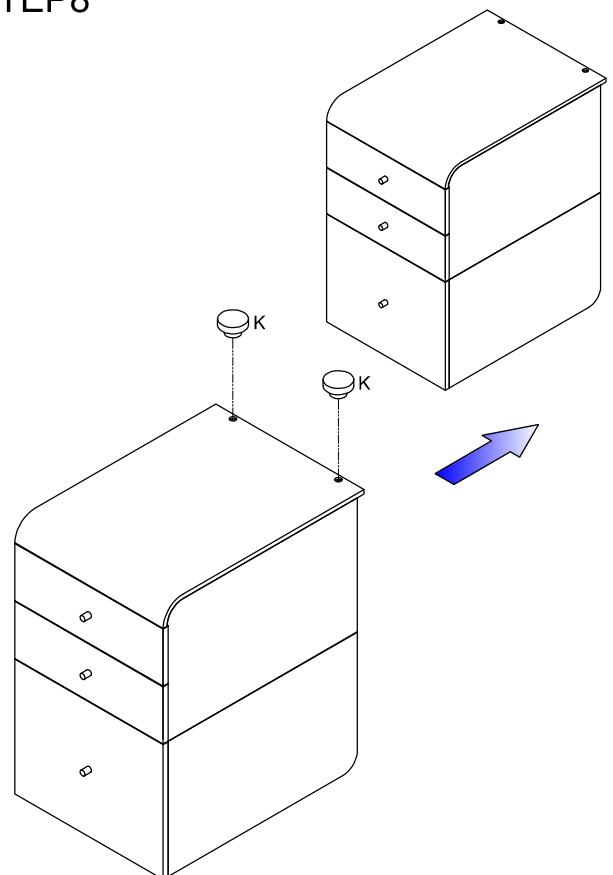


## STEP7



To apply pressure to the chrome discs.

## STEP8



If you need to apply pressure to the chrome discs.